



Improving life after brain injury

Contact us:

For further details or to visit our venues
please call:

Denise Taylor
0121 457 7541

Mon—Fri (answer phone outside office hours)

E-mail: enquiries@headway-bs.org.uk

www.headway-bs.org.uk

Registered Address:
HEADWAY BIRMINGHAM & SOLIHULL
Leighton House, 20 Chapel Rise
Birmingham Great Park, Rednal
Birmingham B45 9SN

Registered Charity Number 1008798
Company Registration Number 2686647



Improving life after brain injury

Room & Venue Hire

2024

Details & prices

- Single Rooms or Office Space
- Large Room & facilities
- Full Venue with facilities

Headway Birmingham and Solihull

is a local independent charity supporting all those affected by acquired brain injury. We provide a number of rehabilitative programmes in Hubs and in the Community, as well as a wide range of support/services for the whole family/carer.

Why we have space to hire.....

As we have grown our services across Birmingham we have needed more space and initially had to rent rooms in order to meet this need. These were extremely expensive for often a small and unsuitable space. So we strived to improve this through acquiring our own buildings and developing these to suit our requirements.

However, as many of our Hub based services run weekdays, we currently have a lot of space (including parking) available many evenings and weekends and feel this is going to waste.

As a charity, we are therefore keen that other 'not for profit' organisations and community groups should be able to benefit. We are therefore, offering rooms and venues at a reasonable and affordable price, whilst also helping us to recover some of our own high costs.

We particularly welcome long term/regular hirers and are also keen to develop partnerships and joint working where it may be feasible. We can offer some 'one off' or more irregular bookings. Please call to discuss your requirements and we will endeavor to accommodate your needs.

To discuss further call: Denise Taylor 0121 457 7541

The Woodlands

BOOKING SLOTS & PRICING STRUCTURE GUIDE

BLOCK 1: Weekends only	BLOCK 2: Weekends only	BLOCK 3: Any Day
9 am—12.30 pm	1.30 pm—5.00 pm	5.30 pm—9.30 pm
£70	£70	£75

2 blocks booked adjoined £130

All 3 blocks adjoined £200

NB: Block times allow for changeover. If more than one block is booked consecutively, the times would run together. For longer term/annual bookings we can discuss price package deals. Also, other times can be discussed if required.

Sutton House

BOOKING SLOTS & PRICING STRUCTURE GUIDE

GROUND FLOOR

BLOCK 1: Weekends only	BLOCK 2: Weekends only	BLOCK 3: Any Day
9 am—12.30 pmPM	1.30 pm—5.00 pm	5.30 pm—9.30 pm
£120	£120	£130

2 Blocks booked adjoined £200

All 3 Blocks adjoined £325

WHOLE BUILDING

BLOCK 1: Weekends only	BLOCK 2: Weekends only	BLOCK 3: Any Day
9 am—12.30 pm	1.30 am—5.00 pm	5.30 am—9.30 pm
£200	£200	£220

2 blocks booked adjoined £350

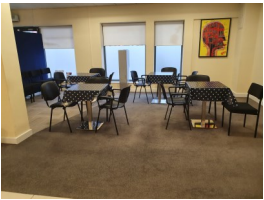
All 3 blocks adjoined £500

NB: Block times allow for changeover. If more than one block is booked consecutively, the times would run together. For longer term/annual bookings we can discuss price package deals. Also other times can be discussed if required.

We can also accommodate some single room bookings and office space during block times. Please call to discuss your needs further as we can be flexible on these slots/prices.

Denise Taylor 0121 457 7541

Hiring of New Sutton House can either be for the whole building, either floor or specific rooms. Access to the first floor is via a newly installed lift, but this would only be useable if the whole building is hired.

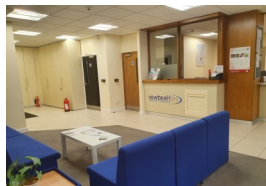
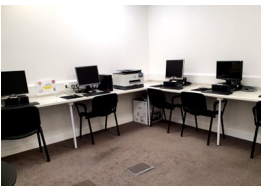


Ground Floor

A light bright space ideal for running group meets and activities. The ground floor consists of 2 main large spaces and a few smaller rooms. Approximately 2300 m2 in total.



- Reception Area
- Bistro style area for socialising with bistro tables and chairs. Serving/reception area
- Reception seating area
- Storage cupboard
- 2nd activity area
- Pool table
- Computer room
- Small 1 to 1 room
- Activity/meeting room
- Toilets (1 being wheelchair accessible)

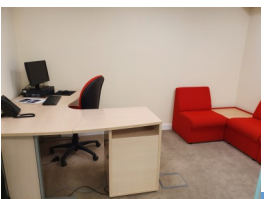


First Floor

Split into smaller rooms with an open space in the middle. Ideal where more office and separate work areas are required. Useful space for an activity/group. Approximately 2200 m2 in total.



- Training, activity room with TV/wifi/projector/whiteboard, table and chairs
- Kitchen with areas for table & chairs
- Floor area -ideal for small activity sessions—yoga etc.
- Office -Desk, computer, seats
- Small Gym area
- Office -2 desks and computers, seats
- 2 toilets
- Cloak cupboard & storage cupboard



**Leighton House, 20 Chapel Rise
Birmingham Great Park, Rednal
Birmingham B45 9SN**



A modern self-contained building positioned in the lovely wooded grounds of our Leighton House site in Rubery. There is a main bus route and local local train station a short distance away. Next to a site where there is Morrisons, Hollywood Bowl, David Lloyd Gym, cinema and many pubs and eateries.

Other facilities include:-

- Heating
- Disabled toilet
- Kitchen area
- Wi Fi/projector
- Smaller private rooms
- Private parking for up to 34 cars (includes 3 disabled)
- Ramped access
- Private site and use of garden/patio area

Hiring of The Woodlands would usually be for the whole building. However, should you require just one of the rooms occasionally or as a 'one off' we are happy to discuss your needs.



Main Room

A large airy carpeted room, ideal for training, meetings, group meets, activities etc.

- Measures approximately 45 m² 15– 25 capacity
- 20 Chairs and 7 tables
- Projector/Wi Fi & White Board

Small Room 1

A smaller carpeted room, ideal for small meetings and activities etc.

- Measures approximately 8 sq mtrs
- Round Table
- 4 Chairs



Small Room 2

A second small carpeted room, ideal for small meetings and counselling/1 to 1 sessions etc., or just as a 'chill out' area.

- Measures approximately 8 m²
- 2 small sofas
- Coffee table



Facilities

A Small kitchen area for preparing drinks & washing up.

- Fridge/kettle/ microwave/toaster
- Disabled Toilet



Sutton House

Sutton House, 380-384 Birmingham Road,
Wylde Green, Sutton Coldfield.
B72 1YH



A modern building positioned in a convenient spot on Wylde Green high street. It is on the main bus route and has private parking for 9 to 10 vehicles. It is also in walking distance of the local train station, many local shops and eateries.

Other facilities include:-

- Air Conditioning and Heating
- Disabled Toilet
- Kitchen area
- Computer usage/Wi Fi/projector
- Storage